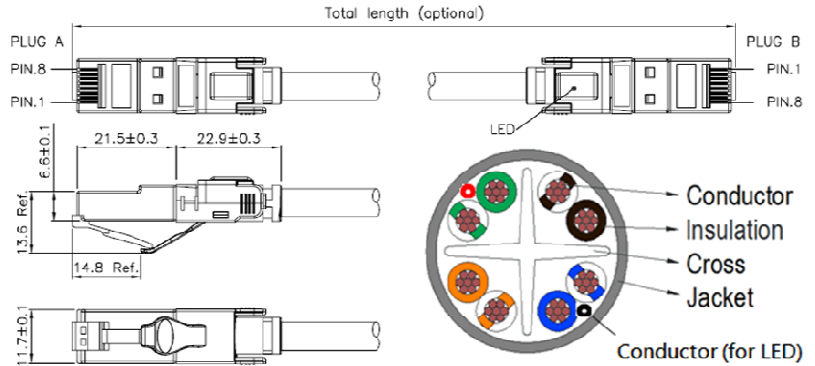
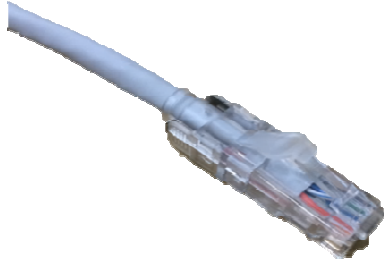




CAT6 UTP-OWL

C6 UTP, 4 Pair, 24AWG Patch Cord, LED Boot

CLEARLINKS™



Application and Features

Compliant with the TIA 568C.2 & ISO 11801 Component level performance
 Supports IEEE802.3an & IEEE802.3at, 568B Wiring
 Slim, Snag-Free Strain-relief boot design ensures ease of use in high density applications
 Connect the power supply to one end of the cord, LED light will identify both ends of the cord immediately.

Standards Compliance

ANSI/TIA 568C.2, ISO/IEC 11801	Patch cord High Frequency Performance
IE61935-2	Patch cord Mechanical & Structure
IE60603-7, TIA 1096-A	Modular Plug Structure
IE60332-1-2	Cable Flame Retardant Standard
UL444	Communication cable safety standard
RoHS	Environmental compliance

Patch Cord Specification

Pulling Tension	Max. 50N
Bending Radius (without load)	Min. 8 x Cable Diameter
Temperature Range	Installation 0 to 50°C
	Storage -20 to 70°C (Under static conditions)
	Operation -10 to 60°C (Under static conditions)
Dielectric Strength	1kV AC for 60secs
Mean Characteristic Impedance	100 Ohms ± 5 Ohms @ 100MHz
Nominal Velocity Propagation	69%

Cable Specification

Conductor	Bare Copper, 24AWG, 7 x 0.192mm
Insulation	HDPE, OD 0.98mm normally
Cross Filler	HDPE, 4.14mm width
Braid	N/A
Drain Wire	N/A
Cable Jacket	PVC, OD 6.0 ± 0.2mm, 0.48mm min. & 0.6mm avg. thickness

Plug & Boot Specification

Conductor	Phosphor Bronze, 50 micro-inch Gold plating over 100 micro-inch Nickel
	Plating on surface contact area. 0.3mm thickness, 1 prong for Stranded wire
Housing	Poly Carbonate (PC), UL94 V-2, Compliant with IEC60603-7, TIA 1096-A
Shield	N/A
Strain-relief Boot	Transparent, Poly Carbonate (PC)
LED	Orange Light

